



How to repair Honda airbag

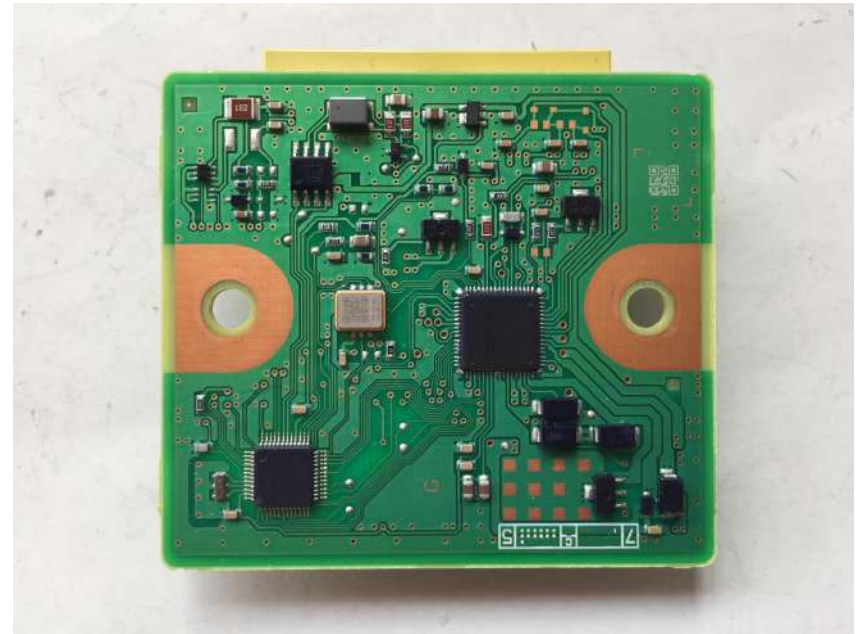
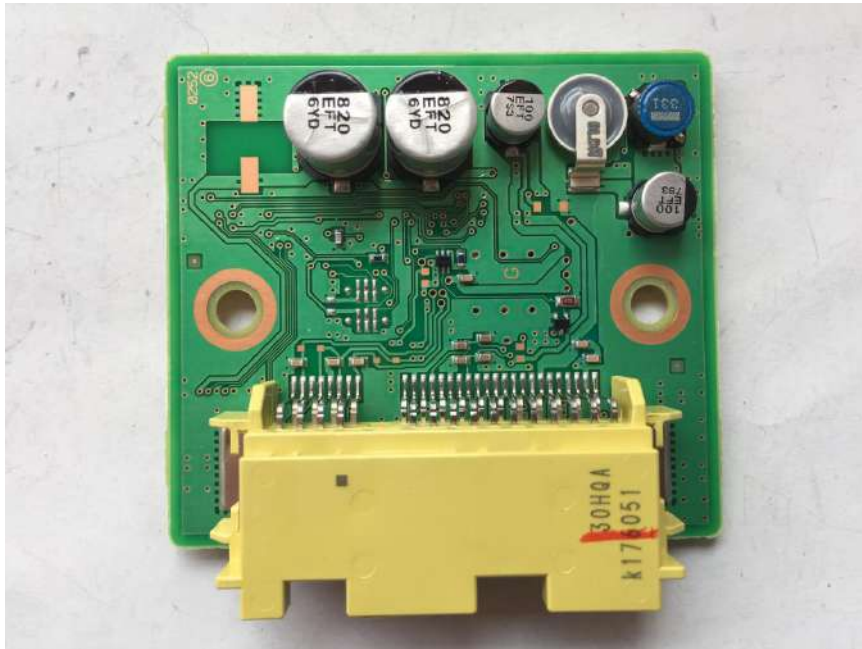
Model: Honda

No.: 77960-T9A-F411-M2

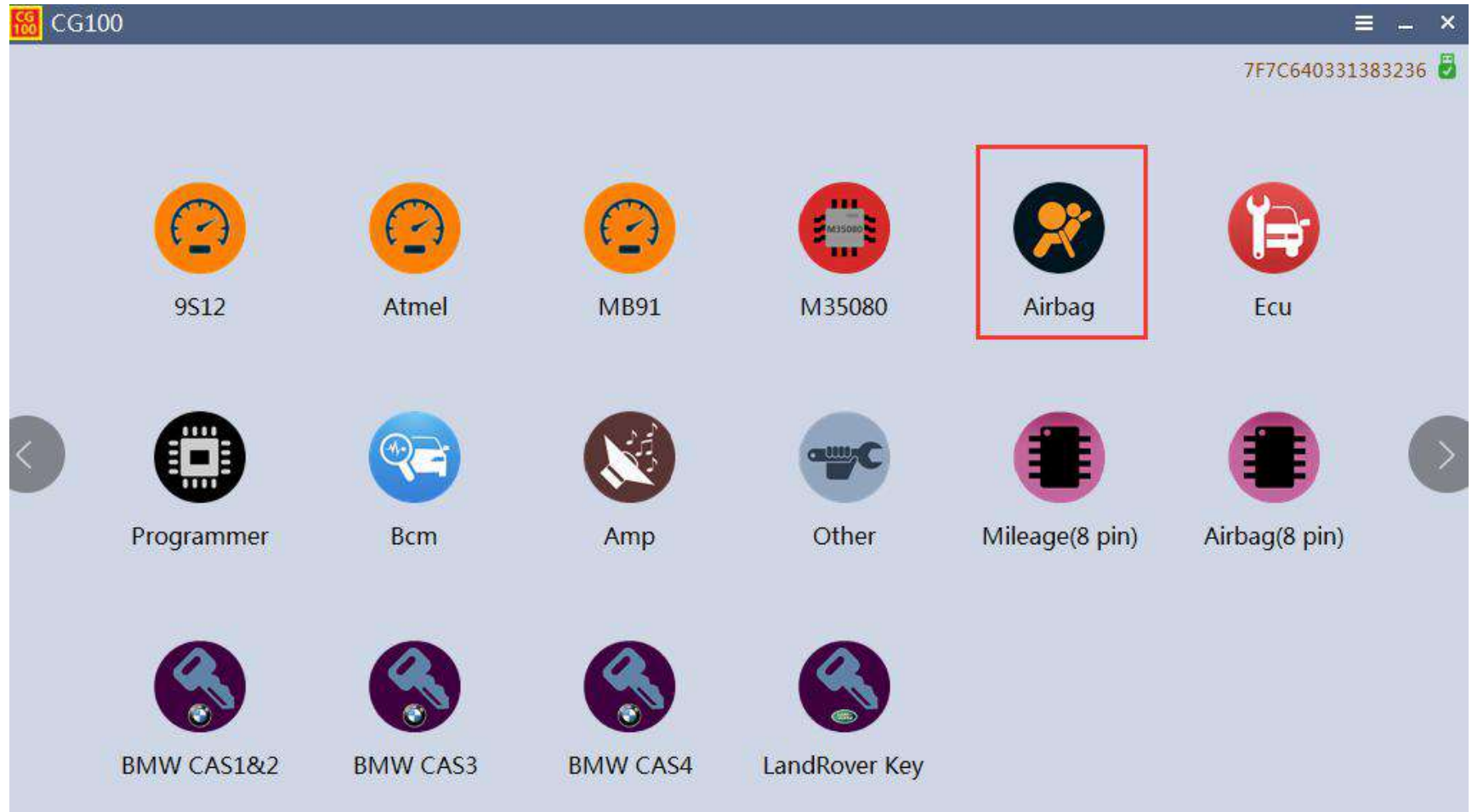
Chip: R5F2154

1. The vehicle is powered off, remove the airbag computer, check the style and the chip





1. Open the CG100 special software, enter the corresponding operation interface, and wire according to the wiring diagram.



Airbag

Search for models, dashboards

Search

Back



BAIC



BMW



Benz



Besturn



Borgward



Buick



ChangAn



Chery



Chevrolet



Citroen



DongFeng



Ford



GM



Geely



Great Wall



Haima



Hanteng



Honda



Hyundai



JAC



Jaguar



KIA



Land Rover



Luxgen



Mazda



Nissan



Peugeot



Renault



SouthEast



Subaru



Suzuki



Toyota



Trumpchi



Volkswagen



Volvo



WuLing



Honda

[Back](#)

77960-SZT-E811-M2

77960-SZT-G811-M2

77960-SZT-H810-M2

77960-SZT-J411-M2

77960-SZT-L010-M2

77960-SZT-U811-M2

77960-T2J-H710-M4

77960-T2J-H910-M4

77960-T3X-H910-M4

77960-T5A-H410-M2

77960-T6A-H111-M2-7782

77960-T6A-H120-M2

77960-T6A-H711-M2

77960-T6A-H720-M2

77960-T7A-H610-M2

77960-T7A-H810-M2

77960-T9A-H410-M2

77960-T9A-M411-M2

77960-TAE-H111-M2

77960-TAE-H111-M2 v2

77960-TAE-H711-M2

77960-TC4-H010-M2

77960-TC4-H810-M2

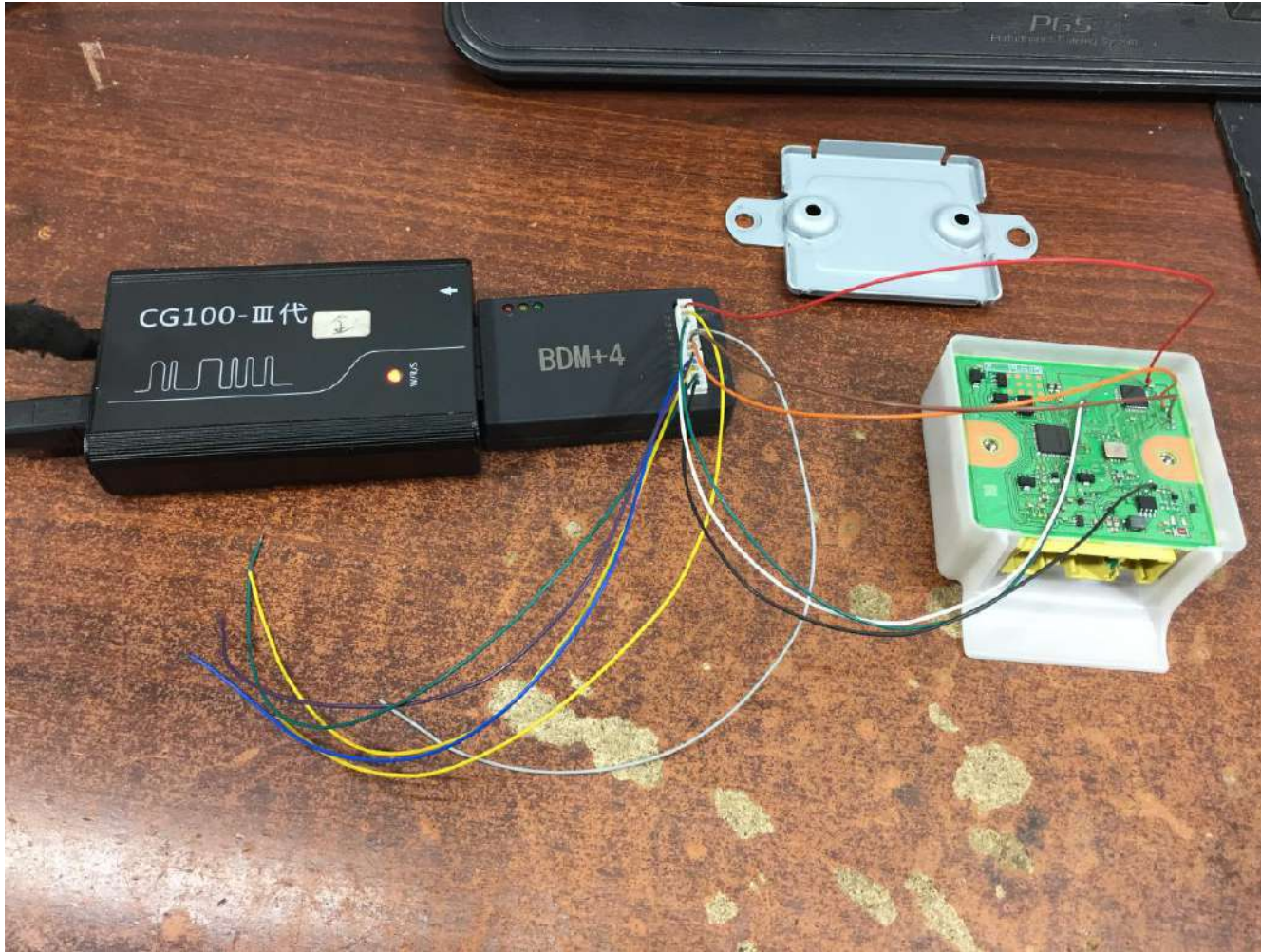
77960-TEA-H410-M4

77960-TEA-H820-M4

77960-TF0-H440-M3


77960-TF0-H632-M3

3. After confirming that the wiring is correct, the device is powered on, operate it step by step according to the software prompts.



Note: Please do not touch any cables when it is reading.

CG100

 Honda

77960-T9A-M411-M2

Chip: R5F2154

Back

BDM+4 ExtBoard


R8C54X Family QFP48 Pin Diagram

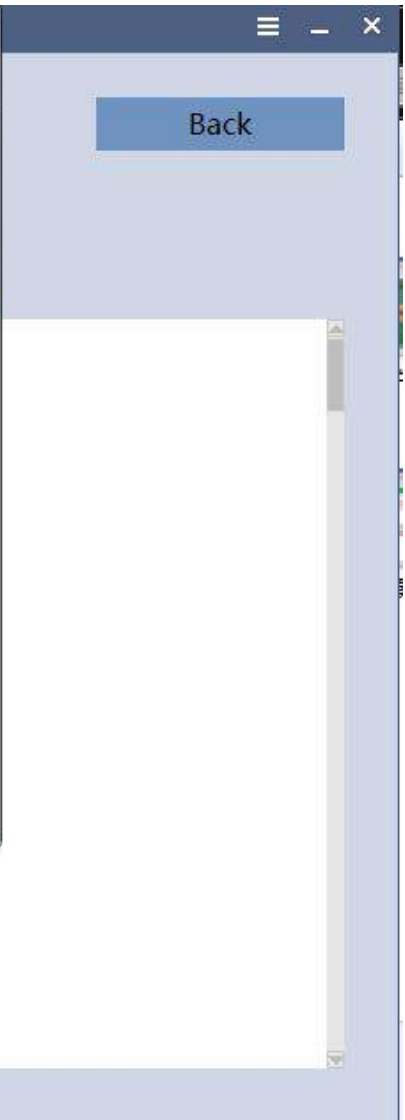
77960-T5A (T9A) Wiring Diagram

Reading airbag data, please don't disconnect...

Click the picture to enter the full screen

Start





```
00000110 FF FF FF FF FF FF FF FF FF FF FF FF FF FF FF
00000120 FF FF FF FF FF FF FF FF FF FF FF FF FF FF FF
00000130 FF FF FF FF FF FF FF FF FF FF FF FF FF FF FF
00000140 FF FF FF FF FF FF FF FF FF FF FF FF FF FF FF
00000150 FF FF FF FF FF FF FF FF FF FF FF FF FF FF FF
00000160 FF FF FF FF FF FF FF FF FF FF FF FF FF FF FF
00000170 FF FF FF FF FF FF FF FF FF FF FF FF FF FF FF
00000180 FF FF FF FF FF FF FF FF FF FF FF FF FF FF FF
```




Honda

77960-T9A-M411-M2

Chip: R5F2154

Back

Open

Save

Read

Write

-----	[0]	[1]	[2]	[3]	[4]	[5]	[6]	[7]	[8]	[9]	[A]	[B]	[C]	[D]	[E]	[F]	0	1	2	3	4	5	6	7	8	9	A	B	C	D	E	F
00000000	FF	FF	FF	FF	FF	FF	FF	FF	FF	FF	FF	FF	FF	FF	FF	FF
00000010	FF	FF	FF	FF	FF	FF	FF	FF	FF	FF	FF	FF	FF	FF	FF	FF	
00000020	FF	FF	FF	FF	FF	FF	FF	FF	FF	FF	FF	FF	FF	FF	FF	FF	
00000030	FF	FF	FF	FF	FF	FF	FF	FF	FF	FF	FF	FF	FF	FF	FF	FF	
00000040	FF	FF	FF	FF	FF	FF	FF	FF	FF	FF	FF	FF	FF	FF	FF	FF	
00000050	FF	FF	FF	FF	FF	FF	FF	FF	FF	FF	FF	FF	FF	FF	FF	FF	
00000060	FF	FF	FF	FF	FF	FF	FF	FF	FF	FF	FF	FF	FF	FF	FF	FF	
00000070	FF	FF	FF	FF	FF	FF	FF	FF	FF	FF	FF	FF	FF	FF	FF	FF	
00000080	FF	FF	FF	FF	FF	FF	FF	FF	FF	FF	FF	FF	FF	FF	FF	FF	
00000090	FF	FF	FF	FF	FF	FF	FF	FF	FF	FF	FF	FF	FF	FF	FF	FF	
000000A0	FF	FF	FF	FF	FF	FF	FF	FF	FF	FF	FF	FF	FF	FF	FF	FF	
000000B0	FF	FF	FF	FF	FF	FF	FF	FF	FF	FF	FF	FF	FF	FF	FF	FF	
000000C0	FF	FF	FF	FF	FF	FF	FF	FF	FF	FF	FF	FF	FF	FF	FF	FF	
000000D0	FF	FF	FF	FF	FF	FF	FF	FF	FF	FF	FF	FF	FF	FF	FF	FF	
000000E0	FF	FF	FF	FF	FF	FF	FF	FF	FF	FF	FF	FF	FF	FF	FF	FF	
000000F0	FF	FF	FF	FF	FF	FF	FF	FF	FF	FF	FF	FF	FF	FF	FF	FF	
00000100	FF	FF	FF	FF	FF	FF	FF	FF	FF	FF	FF	FF	FF	FF	FF	FF	
00000110	FF	FF	FF	FF	FF	FF	FF	FF	FF	FF	FF	FF	FF	FF	FF	FF	
00000120	FF	FF	FF	FF	FF	FF	FF	FF	FF	FF	FF	FF	FF	FF	FF	FF	
00000130	FF	FF	FF	FF	FF	FF	FF	FF	FF	FF	FF	FF	FF	FF	FF	FF	
00000140	FF	FF	FF	FF	FF	FF	FF	FF	FF	FF	FF	FF	FF	FF	FF	FF	
00000150	FF	FF	FF	FF	FF	FF	FF	FF	FF	FF	FF	FF	FF	FF	FF	FF	
00000160	FF	FF	FF	FF	FF	FF	FF	FF	FF	FF	FF	FF	FF	FF	FF	FF	
00000170	FF	FF	FF	FF	FF	FF	FF	FF	FF	FF	FF	FF	FF	FF	FF	FF	
00000180	FF	FF	FF	FF	FF	FF	FF	FF	FF	FF	FF	FF	FF	FF	FF	FF	

CG100

Whether to remove the collision fault code

是(Y) 否(N)

4. It will show “ Repair successfully”, please put the airbag computer back on car and test it if it is ok.---Done